

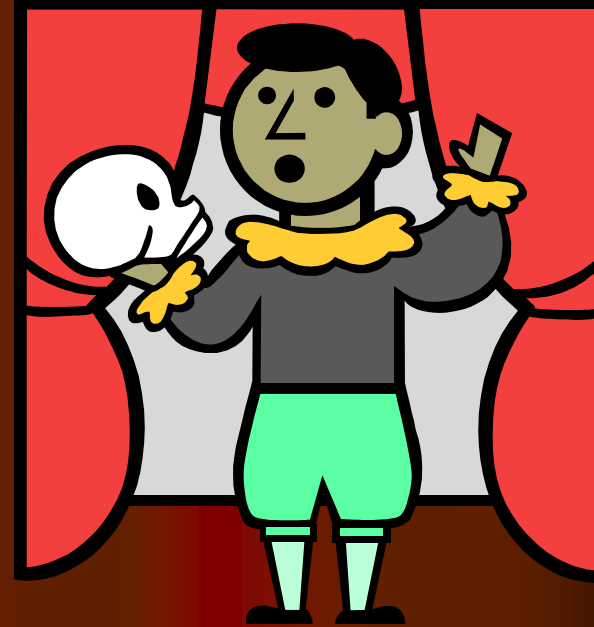
ROMEO & JULIET

Act I Notes



ROUND CHARACTER

- Character with many traits, both good and bad
- Usually a main character



FLAT CHARACTER

- Character with only one or two traits
- usually a minor character



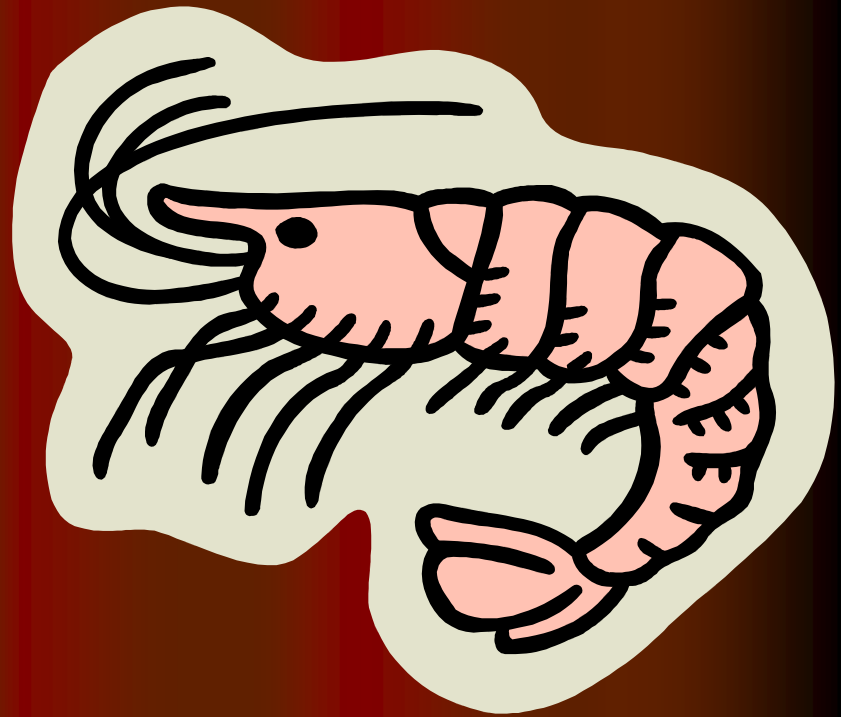
DRAMATIC FOILS

- Contrasting characters
- Have very different personalities or attitudes
- When the 2 characters are on stage at the same time, their differences are emphasized



OXYMORON

- A combination of words that contradict each other
- Shows confusion
- Ex. Sweet sadness
- Ex. Jumbo shrimp



OXYMORONS

LIVE RECORDING

ACT NATURALLY

TERRIBLY PLEASED

PRETTY BAD

RANDOM PATTERN

VEGETARIAN HAMBURGER

WHITE GOLD

GENUINE IMITATION

CURRENT HISTORY

CIVIL WAR

APPEAR INVISIBLE

HOME WORK

SAME DIFFERENCE

NATURAL MAKEUP

LIQUID GAS

LONG SHORTS

KNOWN SECRET

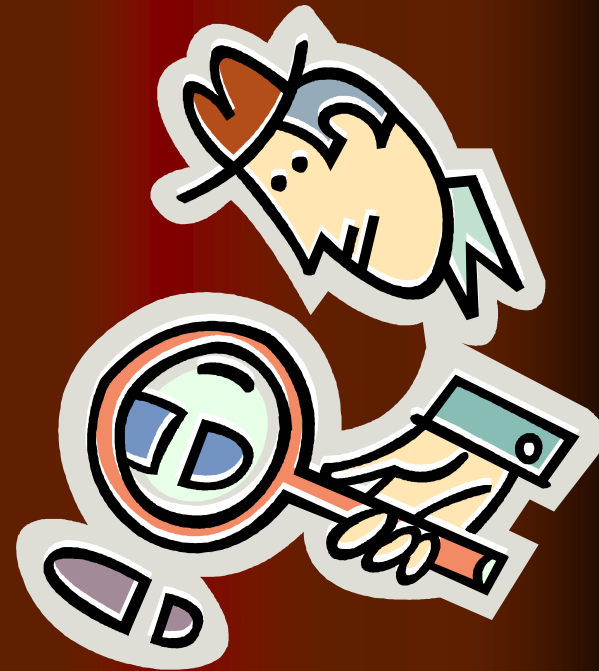
EXACT ESTIMATE

GOOD GRIEF

ALONE TOGETHER

FORESHADOWING

- Use of clues that suggest events that have yet to occur
- Author gives us hints
- Creates suspense



STAGE DIRECTIONS

- Notes in the text of a play that describe how the work should be performed (staged)
- Usually printed in italics or in brackets
- Describe scenes, sound effects, actions of characters

DIALOGUE

- Conversation between or among characters
- **ASIDE:** short speech delivered by a character; usually unheard by other actors (like a whisper on stage)



Act I Roles

- Sampson
- Gregory
- Abram
- Balthasar (non-speaking)
- Tybalt
- Benvolio
- Officer
- Capulet
- Lady Capulet
- Montague
- Lady Montague
- Prince Escalus
- Romeo
- Paris
- Servant
- Nurse
- Juliet
- Mercutio
- 1st Serving man
- 2nd Serving man
- 3rd Serving man